

SKY MEADOWS ESTATES

IN THE SW 1/4 SEC. 11, T. 8 S., R. 3 W., W.M.,
CITY OF SALEM, MARION COUNTY, OREGON

BY:
MULTI/TECH ENGINEERING SERVICES, INC.
1155 13TH ST. S.E. SALEM, OREGON 97302
503-363-9227

NOTES:

- ALL MONUMENTS FOUND IN GOOD CONDITION AND WITHIN 0.2' OF THE SURFACE OF THE GROUND UNLESS OTHERWISE NOTED.

- = FOUND MONUMENT SEE TABLE
- ⦿ = 5/8" IRON ROD WYPC SCRIBED "LS 1862" PER MCSR 34942
- = SET 5/8" X 30" IRON ROD WITH YELLOW PLASTIC CAP SCRIBED "MULTI/TECH ENG."
- = SET 5/8" X 30" IRON ROD WITH ALUMINUM CAP SCRIBED "MULTI/TECH ENG."

MCSR = MARION COUNTY SURVEY RECORD
BOTP = MARION COUNTY BOOK OF TOWN PLATS
W/YPC = WITH YELLOW PLASTIC CAP
() = RECORD DATA PER SURVEY NOTED
[] = RECORD AND MEASURED DATA PER SURVEY NOTED
PP = PARTITION PLAT
IP = IRON PIPE
IR = IRON ROD
B = BOOK
P. = PAGE
V. = VOLUME
R = REEL
PUE = PUBLIC UTILITY EASEMENT

MONUMENT TABLE

- 5/8" IRON ROD WYPC SCRIBED BARKER PLS 636" PER CAMBRIDGE MEADOWS PHASE V, B. 40, P. 105, BOTP. VERIFIED IN PP. 2018-3
- 5/8" IRON ROD WITH ALUMINUM CAP SCRIBED BARKER PLS 636" PER CAMBRIDGE MEADOWS PHASE V, B. 40, P. 105, BOTP
- 5/8" IRON ROD WYPC SCRIBED BARKER PLS 636" PER CAMBRIDGE MEADOWS PHASE II, B. 38, P. 47, BOTP. VERIFIED IN P.P. 2018-3
- 2" IRON PIPE WITH 5/8" IRON ROD WITH ALUMINUM CAP SCRIBED "BARKER PLS 636" INSIDE SAID PIPE PER CAMBRIDGE MEADOWS PHASE II, B. 38, P. 47, BOTP
- 3/4" IRON PIPE, PINCHED. 1.0' BELOW SURFACE. PER MCSR 9885, INITIAL POINT OF SPRINGER FRUIT TRACTS NO 1, B. 6, P. 35 BOTP
- 3/4" IRON ROD ORIGIN UNKNOWN
- 5/8" IRON ROD WITH ALUMINUM CAP SCRIBED "PLS 1195" PER DURANGO, B. 45, P. 120, BOTP
- 1/2" IRON PIPE PER MCSR 12784
- IRON PIPE, PINCHED. 1.0' BELOW SURFACE. PER FIR KNOLL PARK B. 14, P. 17
- 5/8" IRON ROD WYPC SCRIBED BARKER PLS 636" PER CAMBRIDGE MEADOWS PHASE II, B. 38, P. 47, BOTP. VERIFIED IN P.P. 2018-3

REFERENCE SURVEYS

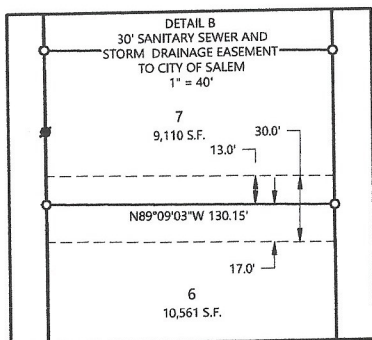
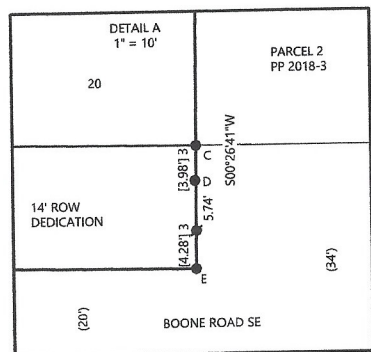
- MCSR 9885
- MCSR 12784
- MCSR 34942
- SPRINGER FRUIT TRACTS NO 1, B. 6, P. 35, BOTP
- CAMBRIDGE MEADOWS PHASE II, B. 38, P. 47, BOTP
- CAMBRIDGE MEADOWS PHASE V, B. 40, P. 105, BOTP
- DURANGO, B. 45, P. 120, BOTP
- P.P. 2018-3

CURVE DATA					
CURVE	RADIUS	DELTA	ARC LENGTH	CHORD BEARING	DIST.
C1	20.00'	90°43'05"	31.67'	N45°16'09"E	28.46'
C2	20.00'	89°16'55"	31.17'	S44°43'51"E	28.11'
C3	20.00'	90°32'05"	31.60'	S45°10'39"W	28.42'
C4	20.00'	89°27'55"	31.23'	S44°49'21"E	28.15'

REGISTERED
PROFESSIONAL
LAND SURVEYOR

OREGON
JULY 13, 2004
ROBERT D. HAMMAN
6420ZLS

EXPIRES: 6-30-2021



1" = 60'
01/08/2020
#6640

